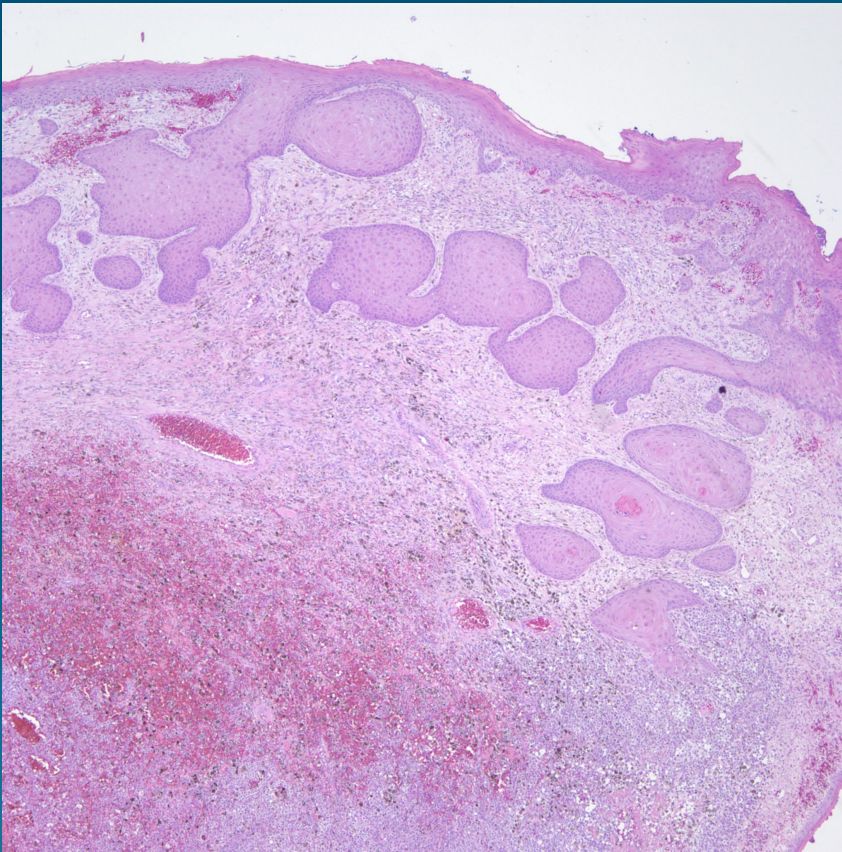


What is the best diagnosis?

- A. Invasive squamous cell carcinoma with regression
- B. Basosquamous cell carcinoma
- C. Malignant blue nevus
- D. Malignant melanoma with pseudoepitheliomatous hyperplasia
- E. Pigmented nodular basal cell carcinoma

Malignant melanoma with
pseudoepitheliomatous hyperplasia

Pearls



- Melanoma may occasionally elicit a pseudoepitheliomatous hyperplasia, mimicking a squamous cell carcinoma
- May be an important differential diagnosis in superficial biopsies
- Difficult cases may need IHC to differentiate